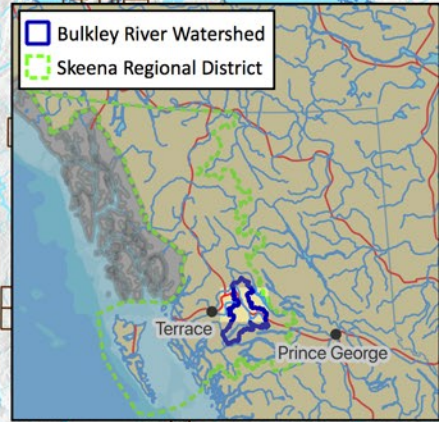
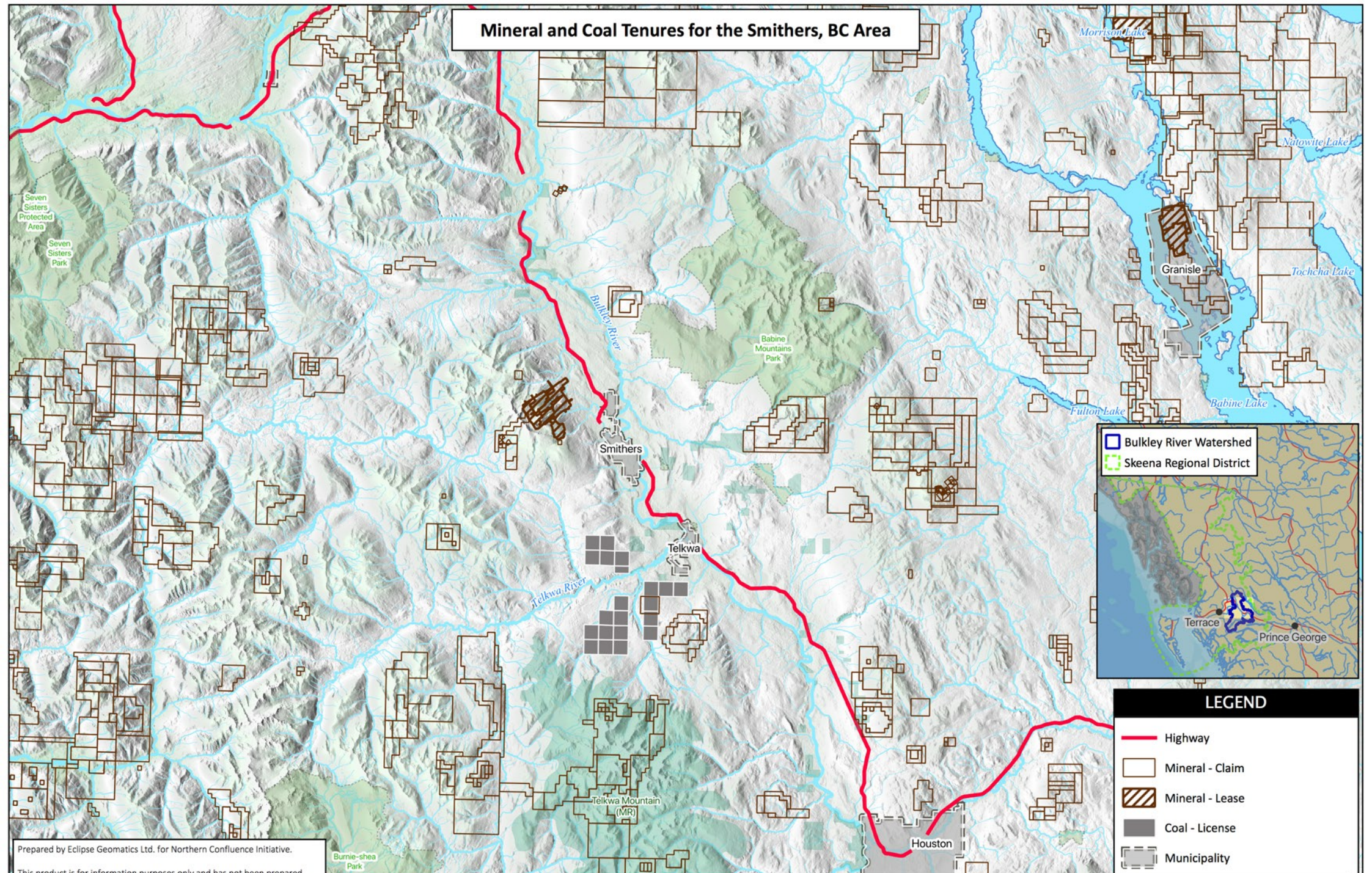


Mineral and Coal Tenures for the Smithers, BC Area



LEGEND

- Highway
- Mineral - Claim
- Mineral - Lease
- Coal - License
- Municipality

Scale: 1:500,000

0 10 20 km

Map Projection: NAD83 BC Albers

Prepared by Eclipse Geomatics Ltd. for Northern Confluence Initiative.

This product is for information purposes only and has not been prepared for legal or other purposes. Users of this information should review or consult the primary data and information sources to ascertain the usability of the information. Eclipse Geomatics Ltd. are not responsible for any errors, omissions or deficiencies with this map.

Copyright © Eclipse Geomatics Ltd. All Rights Reserved.

Mineral and Coal Tenure Area Statistics			
Region	Total Area (km ²)	Mineral Tenures Area (km ²)	Mining Tenures (% Total Area)
Bulkley River Watershed	12,143	2,756	22.70%
Skeena Regional District	330,781	36,967	11.18%